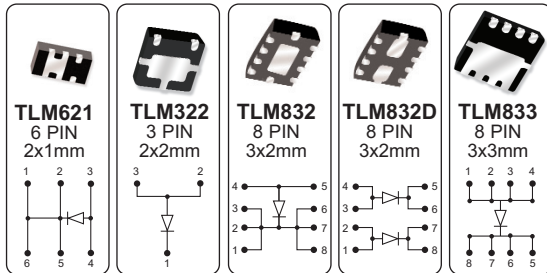




Schottky Rectifiers in a Tiny Leadless ModulesTM



features

- Lower Profile than standard devices (under 1.0mm)
- Uses less board space than SMA, SMB and SMC devices
- Improved thermal efficiency and power capability
- All devices are Pb-Free and RoHS Compliant

description

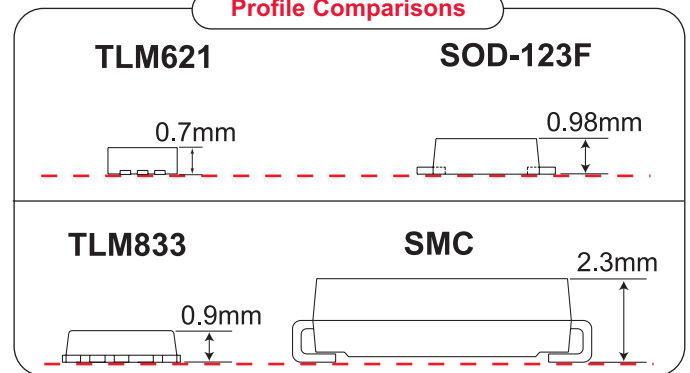
Introducing the new Central Semiconductor Schottky Rectifiers in Tiny Leadless Module packages. These new devices are manufactured in the following configurations:

- CTL5H05-40M621 utilizes 67% less space than SOD-123F
- CTL5H1-40M322 utilizes 70% less space than SMA
- CTL5H1-40M832D utilizes 77% less space than two SMA
- CTL5H2-40M832 utilizes 68% less space than SMB
- CTL5H3-30M833 utilizes 80% less space than SMC
- CTL5H5-40M833 utilizes 80% less space than SMC

The TLM packages utilize from 2mm² (1mm x 2mm) to 9mm² (3mm x 3mm) of board space, and are all less than 1.0mm in profile (height). These devices are ideal for today's latest portable electronic products requiring an energy efficient device in a tiny SMD package.

Sample Devices
available
upon request.

Profile Comparisons



selection guide



NEW TLM Schottky Rectifiers

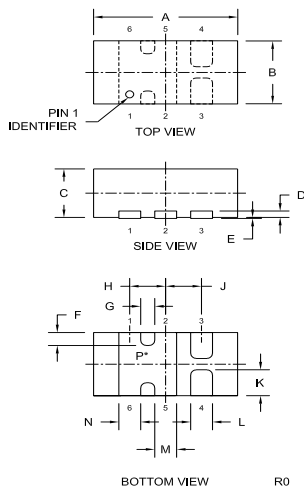
TYPE NO.	V _{RRM} (V) MAX	I _F (A) MAX	V _F (V) MAX	@ I _F (A)	t _{rr} (ns) TYP.	C _D (pF) TYP.	P _D (W) MAX	CASE TYPE
CTL5H05-40M621	40	0.5	0.47	0.5	–	30	0.9†	TLM621
CTL5H1-40M322	40	1.0	0.55	1.0	15	50	1.45†	TLM322
CTL5H1-40M832D	40	Dual, 1.0 per device	0.55	1.0	15	50	1.65†	TLM832D
CTL5H2-40M832	40	2.0	0.50	2.0	–	80	1.9†	TLM832
CTL5H3-30M833	30	3.0	0.45	3.0	–	190	2.5†	TLM833
CTL5H5-40M833	40	5.0	0.52	5.0	–	220	2.5†	TLM833

† Mounted on FR-4 Epoxy PC board with copper mounting pad.

Schottky Rectifiers in a Tiny Leadless Modules™

Mechanical Specifications

TLM621, 6 PIN, 2x1mm

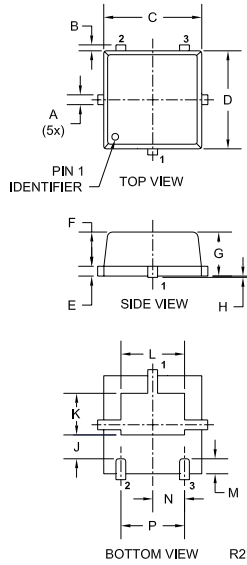


* Exposed pad P connects pins 1, 2, 5, and 6

SYMBOL	INCHES		MILLIMETERS	
	MIN	MAX	MIN	MAX
A	0.073	0.085	1.850	2.150
B	0.033	0.045	0.850	1.150
C	0.026	0.030	0.650	0.750
D	0.006	-	0.150	-
E	0.000	0.007	0.000	0.050
F	0.008	-	0.200	-
G	0.010	-	0.250	-
H	0.020	-	0.500	-
J	0.020	-	0.500	-
K	0.012	0.020	0.300	0.300
L	0.008	0.012	0.200	0.300
M	0.008	0.012	0.200	0.300
N	0.008	0.012	0.200	0.300

TLM621 (REV: R0)

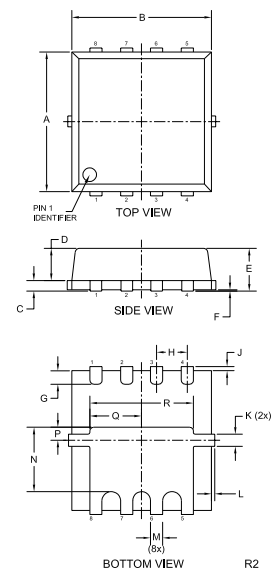
TLM322, 3 PIN, 2x2mm



SYMBOL	INCHES		MILLIMETERS	
	MIN	MAX	MIN	MAX
A	0.007	0.012	0.17	0.30
B	---	0.005	---	0.125
C	0.075	0.083	1.90	2.10
D	0.075	0.083	1.90	2.10
E	0.006	0.010	0.15	0.25
F	0.026	0.030	0.65	0.75
G	0.031	0.039	0.80	1.00
H	0.000	0.002	0.00	0.05
J	0.024	-	0.60	-
K	0.031	0.035	0.79	0.89
L	0.048	0.056	1.22	1.42
M	0.008	0.018	0.20	0.45
N	0.026	-	0.65	-
P	0.051	-	1.30	-

TLM322 (REV:R2)

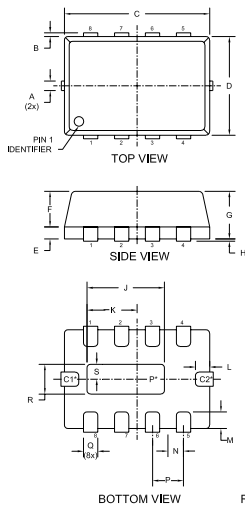
TLM833, 8 PIN, 3x3mm



SYMBOL	INCHES		MILLIMETERS	
	MIN	MAX	MIN	MAX
A	0.114	0.122	2.90	3.10
B	0.114	0.122	2.90	3.10
C	0.026	0.030	0.65	0.75
D	0.026	0.030	0.65	0.75
E	0.031	0.039	0.80	1.00
F	0.000	0.002	0.00	0.05
G	0.008	0.018	0.20	0.45
H	0.026	-	0.65	-
J	---	0.005	---	0.125
K	0.007	0.012	0.17	0.30
L	0.011	0.015	0.28	0.38
M	0.049	0.057	1.25	1.45
N	0.006	0.014	0.15	0.35
Q	0.040	0.048	1.01	1.21
R	0.085	0.093	2.16	2.36

TLM833 (REV:R2)

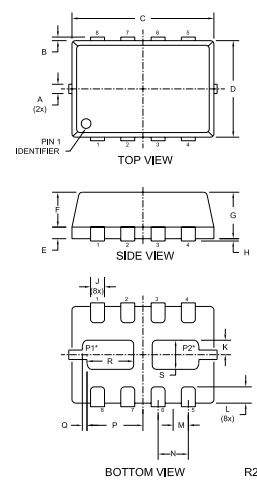
TLM832, 8 PIN, 3x2mm



SYMBOL	INCHES		MILLIMETERS	
	MIN	MAX	MIN	MAX
A	0.007	0.012	0.170	0.300
B	---	0.005	---	0.125
C	0.114	0.122	2.900	3.100
D	0.075	0.083	1.900	2.100
E	0.006	0.010	0.150	0.250
F	0.026	0.030	0.650	0.750
G	0.031	0.039	0.800	1.000
H	0.000	0.002	0.000	0.050
J	0.009	0.013	0.240	0.340
K	0.008	0.014	0.160	0.360
L	0.008	0.018	0.200	0.450
M	0.008	0.018	0.200	0.450
N	0.013	-	0.325	-
P	0.026	-	0.650	-
Q	0.009	0.013	0.240	0.340
R	0.017	0.025	0.430	0.630
S	0.026	0.034	0.650	0.850

TLM832 (REV: R2)

TLM832D, 8 PIN, 3x2mm



SYMBOL	INCHES		MILLIMETERS	
	MIN	MAX	MIN	MAX
A	0.007	0.012	0.170	0.300
B	---	0.005	---	0.125
C	0.114	0.122	2.900	3.100
D	0.075	0.083	1.900	2.100
E	0.006	0.010	0.150	0.250
F	0.026	0.030	0.650	0.750
G	0.031	0.039	0.800	1.000
H	0.000	0.002	0.000	0.050
J	0.009	0.013	0.240	0.340
K	0.008	0.014	0.160	0.360
L	0.008	0.018	0.200	0.450
M	0.013	-	0.325	-
N	0.026	-	0.650	-
P	0.040	0.048	1.010	1.210
Q	0.004	-	0.100	-
R	0.032	0.040	0.820	1.020
S	0.017	0.025	0.430	0.630

TLM832D (REV: R2)

* Note:

- Exposed pad P internally connected to pins 1, 2, 3, 6, 7, 8
- Exposed metallized connection C1 internally connected to pins 1, 2, 3, 6, 7, 8
- Exposed metallized connection C2 internally connected to pin 5

* Note:

- Exposed pad P1 common to pins 7 and 8
- Exposed pad P2 common to pins 5 and 6

CentralTM
Semiconductor Corp.

Innovations in Discrete
Semiconductors

For further information contact:
Sales at Central Semiconductor Corp.
(631) 435-1110 or visit our website at:
www.centalsemi.com

145 Adams Avenue • Hauppauge • New York • 11788 • USA • Tel:(631) 435-1110 • Fax:(631) 435-1824

PA TLM Schottky